



INSTRUCTION MANUAL

Installation | Maintenance | Use | Safety

Gas Frying Bowl



Model

TFG.6

Image merely illustrates.

CONGRATULATIONS,

You have just purchased a IMG-BRASIL equipment, product of the highest quality, safety and efficiency.

Founded in 1989, IMG-BRASIL is a respected company as one of the best and most complete companies in the field of gastronomy equipment manufacturing.

Constant innovation and improvement of its products, using top-of-line raw materials, ensure superior products consumed in Brazil and in more than 25 countries worldwide.

THE RELIABILITY AND CERTAINTY OF A GOOD PRODUCT ARE IN THE NAME

IMG BRASIL PRODUCT MANUFACTURER



IMPORTANT:

**PRODUCT FOR PROFESSIONAL USE. DO NOT USE BEFORE READING THE MANUAL CAREFULLY.
IN CASE OF QUESTIONS, PLEASE CONTACT US::**

IMG-BRASIL Gastronomy Machinery Industry Ltda.

CNPJ 11.193.347/0001-14 - CREA 131726-3

Road. Antônio Heil – KM 23 Nº 5825 – Neighborhood: Limoeiro –

ZIP CODE 88352-502 - Brusque – SC – Brasil

Phone/fax. +55 47 3251-5555 - Site: www.metvisa.com.br

INDEX

1. Safety Information	4
1.1 General Warnings.....	4
1.2 Mechanical Safety	5
2. Technical Characteristics.....	6
2.1 Main Components	6
2.2 Technical Data	6
2.3 Supply and Disposal of Equipment Packaging.....	7
3. Installation.....	7
3.1 Equipment Layout.....	7
3.2 LPG Gas Installation - Recommendations and Care.....	8
3.3 Safety Procedures and User Instruction	10
4. Equipment Use.....	10
4.1 Utility	10
4.2 Commands.....	11
4.3 Operating Procedures	11
5. Cleaning and Maintenance.....	13
5.1 Cleaning Procedures and Products Used	13
5.2 Maintenance and Procedures in Case of Breakdowns.....	14
5.3 Prolonged Interruption in the Use of the Equipment.....	15
6. Analysis and Troubleshooting.....	16
6.1 Problems, possible causes and solutions	16
7. ANNEXES	18
Exploded View Drawing.....	18
Spare Parts	19



ATTENTION!

The characteristics, pictures and figures presented in this manual should be considered for information. IMG BRASIL reserves the right to make such modifications as may be deemed necessary without prior notice.

1. Safety Information

1.1 General Warnings

- Cautions / precautions must be observed when installing, using, maintaining and discontinuing use of this equipment;
- Before carrying out any operation (assembly, use, maintenance and reuse after prolonged use of the equipment), read the manual carefully;
- The equipment must be used by trained personnel familiar with the use and safety regulations described in this manual;
- This equipment is not intended for use by persons (including children) with reduced physical, sensory or mental capacities, or people with lack of experience and knowledge, unless they have received instructions regarding the use of the equipment or are under the supervision of a person responsible for their safety.
- It is recommended that children be supervised to ensure that they are not playing with the equipment;
- In case of rotation of the personnel that will work with the equipment, the new operator must be educated about the standards and the operation of the same one;
- The operator must use the **Adequate PPE** (Personal Protective Equipment). As for example: use appropriated gloves to protect the hand from burning by hot oil;
- The operator must always be aware of situations that can cause a risk of accidents and avoid them. For example: turn on the gas regulator button without lighting the burner, spreading the gas in the environment causing poisoning, fire and explosion risks;
- After reading and clarifying all doubts, this manual should be carefully stored in an easily accessible location, known to all persons who will operate the equipment and make it available to those who will carry out maintenance for any inquiries. Whenever any questions arise, be sure to check the manual. Do not operate the equipment in any way with doubts;
- In the installation, it is essential to make this manual available to the professionals who will do the same;
- Do not install the equipment near flammable materials;
- Never pour water over hot oil, as it may cause major accidents. In case of an accident, use non-flammable material to extinguish the source. You can even place a metal tray or lid on the pan, to muffle the focus;
- Before starting cleaning and any type of maintenance, it is essential that the equipment is at room temperature, with the burners off and the gas pressure regulator closed;
- Periodically check the condition of the hose and the entire gas installation part as well as the internal and external part of the equipment (burners, collecting drawer, gas regulating buttons, etc.).



ATTENTION!

Do not perform repairs on your own. Refer servicing to qualified service personnel. Only use original parts in your equipment.

1.2 Mechanical Safety

- As the equipment is designed and produced for professional use, considering its purpose/utility, the handling of some components (for example: frying baskets) must be carried out with care;
- Never pour water over the oil, as this could cause a serious accident;
- If you need to move some food that is frying, use a spatula;
- Avoid spilling oil on the floor, as it will make the floor slippery, which may cause accidents. In case of oil spills, clean the floor.
- Before operating the equipment, make sure that the gas installation is free of leaks. Check for gas leaks using soap suds only.
- Insert only specific products into the frying bowl for which the equipment is intended and never place your hands or inflammable products, close to or directly on the heated bowl.
- When cleaning the equipment, be very careful. Turn off the burner and close the gas pressure regulator (gas register). Then wait for the oil to cool completely. Never put your hands or cleaning products in the heated pan. For further information on cleaning the equipment, follow the instructions in item 5 of this manual.

The equipment described in this manual complies with the regulation against mechanical risk. Security is achieved with:

1. **Structure**, which protects the entire frying bowl (which is heated to high temperatures). This avoids burns to the operator;
2. **Frying basket**, which facilitates the handling of fried foods;
3. **Sliding support** that facilitates and assures the user, lighting and visualizing that the burner has lit, preventing gas leakage.

To view the parts described above, see the image in item 2.1 (Main Components – page 6) of this manual.



ATTENTION!

Always that some item referred to safety be removed from the equipment (for example, for cleaning or maintenance), replace it in place and confirm that it is performing its function correctly.

2. Technical Characteristics

2.1 Main Components

For the equipment described in this manual, safety in use, cleaning, maintenance and maximum hygiene are guaranteed by the design and special design of all parts and also by using stainless steel and other materials suitable for contact with food.

The equipment was built with the following characteristics:

- Structure and sliding support made of stainless steel, which has superior corrosion resistance than other steels. It is a material resistant to the attack of several corrosive agents;
- Frying bowl made of aluminum. It is a lightweight material, durable and resistant to the attack of corrosive agents.

See below the main components of the equipment:



Note: For exploded view drawing with a list of spare parts, see the annexes.

2.2 Technical Data

Model	Nominal Measures WidthxHeightxD (mm)	Net Weight (kg)	Quantity of Burners (units)	Gas Consumption (kg/h)	Capacity per Basket (kg)	Oil Capacity (L)
TFG.6	665*x 300*x 560	5,6	01	0,22	2	6

* Use dimensions considered with the frying basket assembled.



ATTENTION!

Features like: model and serial number of the equipment are provided on the label (figure below).



2.3 Supply and Disposal of Equipment Packaging

The equipment is packed with wood or cardboard to ensure its perfect integrity during transport and is accompanied by the following documents:

- Instruction Manual for Installation. Use, Maintenance and Safety;

IMPORTANT

The packaging components (cardboard, wood, foam, strips, etc.) are products that can be assimilated to municipal solid waste and can be disposed of without difficulty. If the equipment is installed in countries with different standards, dispose of the packaging in accordance with current regulations. Dispose of the product correctly to help protect the environment. For more information on recycling, contact your local authorities, waste disposal service or the shop where you purchased the product.

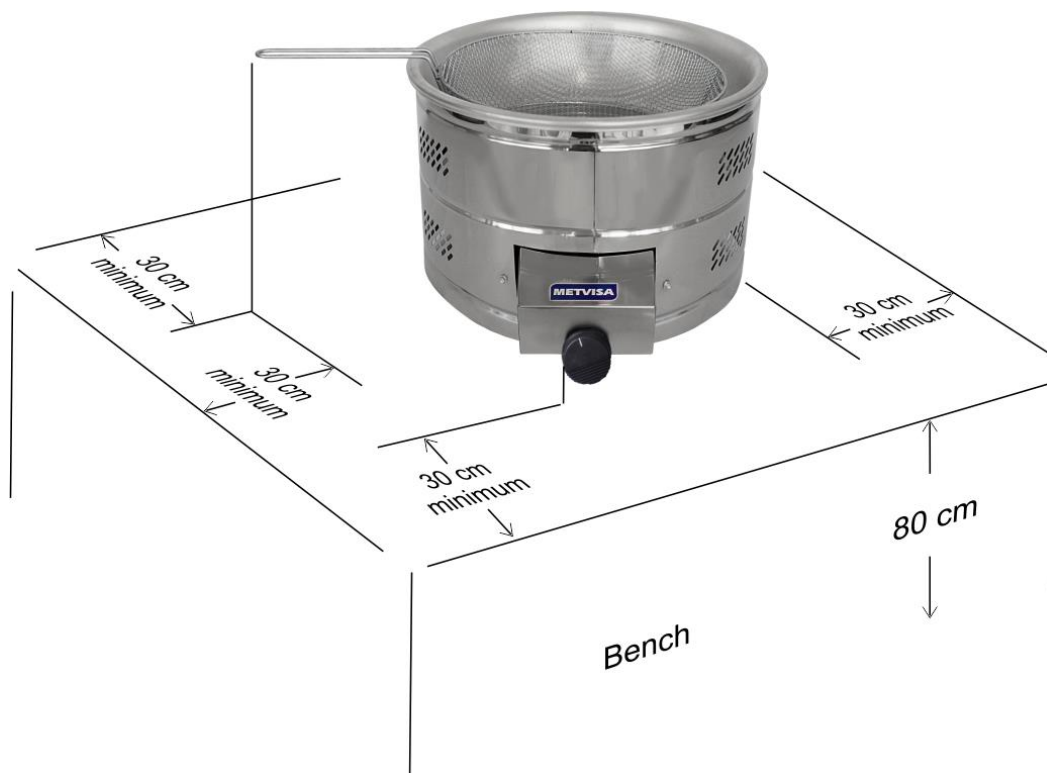
3. Installation

3.1 Equipment Layout

When installing, it is essential to make this manual available to the professionals who will carry it out.

To ensure correct operation and safety, the equipment must be positioned in an airy environment and on a sufficiently large, well-leveled, dry and stable support surface, away from sources of heat and water taps, and at an average height. of 80 cm. Install your equipment leaving a distance of at least 30 cm around it, so that it has enough space for inspection, maintenance, cleaning and use.

It is recommended that the place/establishment where this equipment is installed/used is equipped with an appropriate fire extinguisher, in accordance with the standards and requirements of local legislation. The use of carbon dioxide extinguishers (also known as a carbon dioxide CO2 extinguisher) is recommended. Do not use chemical powder or water extinguishers, as these will only increase the fire. Obs.: In case of fire, you can even place a tray or metal lid on the pan, to muffle the fire.



ATTENTION!

This equipment uses LPG gas (liquefied petroleum gas) for its heating, and cannot be installed in closed environments where there is no air renewal, as this gas is highly toxic.

Keep the gas cylinder at least 1.5 m away from electrical outlets, switches, electric keys, or any equipment subject to a spark or flame, where these in contact with the LPG gas can cause an explosion, causing serious accidents with risk of death to the operator

Do not install the equipment near flammable materials or products.



ATTENTION!

The installation and the place where the equipment will be placed must be in accordance with the Rules for the Prevention of Risks at Work and Safety at Work in Machines and Equipment (Regulatory Norm NR-12).

The manufacturer does not take responsibility for possible direct or indirect damage caused by failure to comply with said standards and other instructions presented in this manual.

3.2 LPG Gas Installation - Recommendations and Care

Check that the place where the equipment will be installed is ventilated and in accordance with the Rules for the Prevention of Risks at Work and Safety at Work on Machines and Equipment (Regulatory Norm NR-12), and periodic inspections by a technician are recommended to ensure that its components are in working condition.



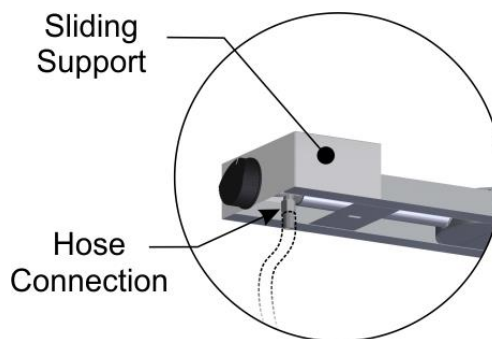
ATTENTION!

The disposition of the equipment must be in an airy place, however that does not have airflow, thus avoiding the extinguishing of the flames in the burners, causing gas leakage.

The gas installation must be done by a qualified technician for this function and observing the safety rules.

The equipment must be installed with the following recommendations and items described below, **HOWEVER NOT PROVIDED WITH THE EQUIPMENT:**

- **Gas cylinder** - for this equipment the minimum mass is 13 kg (code P13) of LPG (liquefied petroleum gas). The cylinder must comply with ABNT 8460. Check the product's warranty seal. If it has violated, do not install.
- **Pressure Regulator or Gas Record** - use only a low pressure regulator (2.8Kpa) and certified, embossed inscription NBR 8473. When installing the regulator, turn the regulator to the right, until it is firm. Never use tools to perform this operation.
- **Hose** - the model with INMETRO certification has the engraving NBR 8613, manufactured in transparent PVC plastic with a yellow stripe. IMG fryers are manufactured with a 3/8" hose connection. The hose must not pass through or be embedded in walls, and must not make any kind of seam (welding or gluing). Fix the ends only with suitable clamps. Never use wires or tapes. Always check the expiration date of the hose.



IMPORTANT

In addition to the instructions in this manual, it is recommended to also follow the instructions of the manufacturers of cylinders, pressure regulators (gas register) and gas hoses, as these items do not accompany the equipment.



ATTENTION!

Change the pressure regulator every 5 years or when it is defective.

Always use the gas cylinder in an upright position. Never overturn, pour or tilt the cylinder, as the gas may flow into the liquid phase, canceling the pressure regulator function, which can cause serious accidents.

Never install the cylinder close to heated surfaces, and keep the conductive gas hose protected from heat so as not to melt causing fire or other accidents.



ATTENTION!

This equipment operates with **LOW PRESSURE GAS**. If your supply network has high pressure, have the low pressure outlet register checked by a technician. If the equipment is switched on at high pressure, the components will be damaged, in addition to creating risks for the operator.

After installation and for your safety, check for gas leaks using only soap and foam. If there is a leak, inform the technician to repeat the installation.

If the leak persists, take the cylinder to a well-ventilated location and inform the dealer or distributor of the cylinder.

IMPORTANT

The manufacturer does not take responsibility for possible direct or indirect damage caused by failure to comply with said standards and other instructions presented in this manual.

3.3 Safety Procedures and User Instruction

The professional who sells the equipment must instruct the user on the correct functioning of the equipment and must hand over this instruction manual.

The user must be informed of the necessary safety measures and must respect them, as well as all measures described in this manual.

Your equipment has mechanical protections (see item 1.2 Mechanical Safety). Removing or tampering with these safety components can cause serious risks to the operator's upper limbs

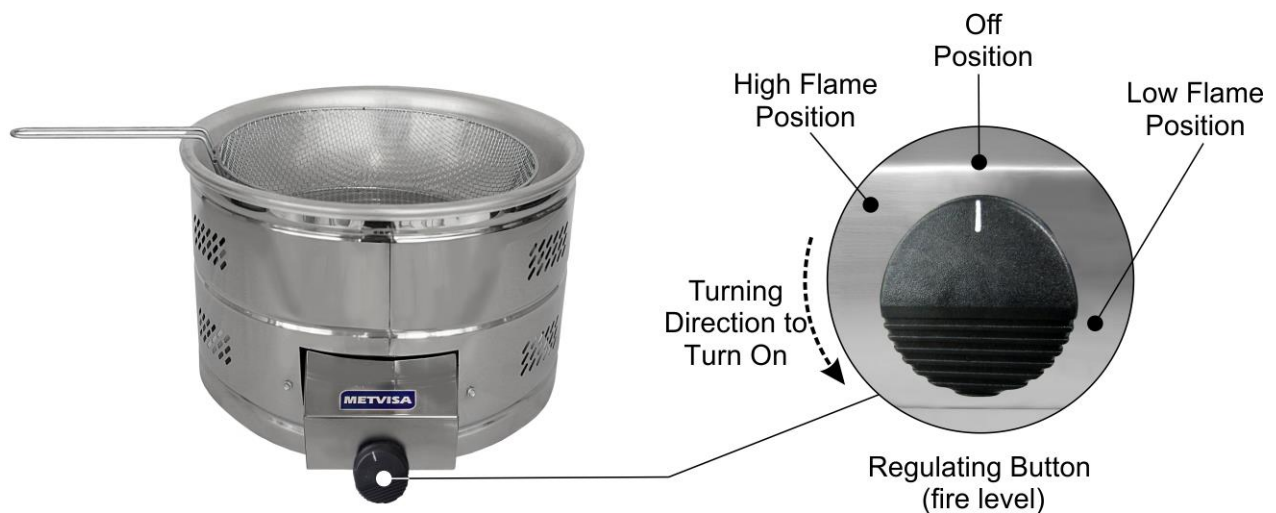
4. Equipment Use

4.1 Utility

This equipment is intended exclusively for frying various food products using edible oil.

4.2 Commands

The equipment consists of gas regulating buttons (fire level) on the front. Check the adjustment positions in the following image:



4.3 Operating Procedures

Before operating your equipment, perform perfect hygiene, especially of the components that will come into contact with food (bowl and basket). Clean the equipment with the burner off, the gas pressure regulator (gas register) closed and the frying bowl at room temperature. Follow the cleaning instructions in item 5 of this manual (below).

After these initial precautions, make sure that the gas hose connections are correctly fixed and that there are no leaks.

Operation: The equipment can only be operated after checking its correct disposition in the workplace, instructed in item 3.1 (Equipment Layout), and after following the care and recommendations of the gas installation, according to the guidelines in item 3.2 (Gas Installation LPG).

Check the following operating instructions:

1. The equipment is switched on manually. Open the gas pressure regulator (gas register);
2. Pull the sliding support where the burner is located;
3. Press the gas regulator button and turn it counterclockwise (on position);
4. For correct and safe ignition, use an automatic type igniter. With the lighter in hand, bring the tip up to 1 or 2 cm from the burner for lighting;

IMPORTANT

The automatic igniter does not come with the equipment, so always check the instructions for use on the packaging, which may vary depending on the make and model.

5. Adjust the fire level on the gas control button.

6. Close the sliding support carefully, the burner is already lit;



ATTENTION!

After opening the gas register, quickly light the burners, as the gas is already spreading in the air.

Light one burner at a time and make sure that the burners are completely lit.

In case of failure to ignite and you can smell gas in the environment, do not ignite.

Wait a few minutes for the air to renew in the room, and then repeat the lighting process.

7. Add oil to the frying bowl respecting the maximum capacity marking. Note: Recommended edible oil type: sunflower, soybean or corn. Hydrogenated or vegetable fat and cottonseed oil are not suitable for this equipment;



ATTENTION!

Do not exceed the maximum capacity level of the frying pan, which is 6 liters. Above that, there is a risk of overflow when placing the basket with the food for frying in the bowl.

8. Add the food to be fried in the basket, and take it to the oil properly heated to the desired temperature;



ATTENTION!

Add the products to be fried slowly and gradually into the basket, thus avoiding bubbling and oil spillage from the bowl. The bubbling will be intense when pouring frozen products.

Attention must be paid to the effect of increased boiling in wet foods and for very large loads.

Never pour water over hot oil, as this could cause a serious accident.

Use appropriate PPE and whenever the floor is dirty, clean it.

9. Allow time for the product to fry completely (until it turns brown). After that, remove the basket and place it in a container to let the excess oil drain.

10. After finishing the work, turn off the burners by turning the gas regulator button clockwise (off position). Close the gas pressure regulator (gas register).

3. Wait for the bowl and oil to reach room temperature before cleaning your equipment.



ATTENTION!

Do not empty the bowl while the oil is still hot, wait for it to completely cool down.



ATTENTION!

After finishing the work step and switching off the burners, close the gas pressure regulator (register), because if it happens to be open, the pressure exerted on the hose may damage it or rupture, causing fire or other accidents.



ATTENTION!

During operation, hot vapors and splashes of superheated oil or grease may be emitted. Always use PPE (Personal Protection Equipments).

IMPORTANT

It is recommended not to use the same oil for many operating cycles. It is dangerous to use old oil as it may have a lower flash point and may be more prone to boiling over.

According to ANVISA (National Health Surveillance Agency) instructions, some care must be taken with the oil used in frying. Here are some of them:

- *“The oil must be filtered at each end of use. During the frying of food, especially breaded foods, which tend to release particles from their surface, remove visible residues in the oil with the help of an appropriate utensil”.*
- *“Oil should be discarded when foam and smoke are observed during frying, intense darkening of the oil and food color and perception of uncharacteristic odor and flavor. It is worth remembering that the appearance of smoke is different from the naturally released steam”.*
- *“Oil should not be disposed of in the public sewage system, housewives can pack it in plastic bags or containers and add it to organic waste. As for merchants and fast-food outlets, as they discard a significant amount, it is suggested to contact companies, bodies or entities licensed by the competent body in the environmental area”.*

(Source: ANVISA - Technical Report No. 11, of October 5, 2004; Subject: Oils and Fats Used in Frying).

5. Cleaning and Maintenance

5.1 Cleaning Procedures and Products Used

Your equipment was built with first-line materials, so use it properly and you will get great satisfaction. Keep your equipment always clean and well-cared for, which will make it much more durable.

Change the oil whenever necessary. Check the instructions, warnings and recommendations provided in item 4.3 of this manual, regarding care with the oil used.

The equipment must be cleaned daily to obtain a good operation and a longer useful life.



ATTENTION!

Before carrying out maintenance or cleaning, make sure that the equipment has the burner turned off, the gas pressure regulator (register) closed and the frying bowl at room temperature;



ATTENTION!

Do not use water jet to clean the equipment.

IMPORTANT

This equipment **is not intended to be immersed in water for cleaning.** Follow the instructions below to find out which parts can be immersed and what special care should be taken with the other parts.

Removable parts (bowl and basket) must be removed from the equipment and washed with warm water and neutral detergent. Clean the corners well, eliminating food residues.

The rest of the equipment should be cleaned as often as possible to prevent food residues from drying out and sticking to the parts. For cleaning, dilute the soap or neutral detergent in warm water and apply with a soft cloth. With a cloth dampened with water, rinse and then dry the parts with a soft, dry cloth.

Never use abrasive products or sponges and substances containing acids or chlorine to clean metal parts, as they can scratch or damage the surface of the parts causing corrosion points.

IMPORTANT

The manufacturer does not take responsibility for any direct or indirect damages caused by non-compliance with these rules and other instructions presented in this manual.



ATTENTION!

It is extremely important that products used in cleaning ensure maximum cleanliness and are non-toxic.

5.2 Maintenance and Procedures in Case of Breakdowns

The operator must be instructed to perform routine inspections, making minor adjustments, cleaning and observing signs of breaches that may occur. Examples include: check for extraneous noises indicating gas leaks; burners that do not light; failure by the equipment to perform the service for which it is proposed; among others. Actions like these are indispensable to ensure a longer equipment life.



ATTENTION!

When maintenance is carried out (even with minor adjustments), always check that the equipment has the burner turned off, the gas pressure regulator (register) closed and the frying bowl at room temperature;

It is also recommended to always carry out preventive maintenance, checking and adjusting clearances, cleaning the internal parts, etc. When detecting broken or poorly functioning parts, replace them, always using original parts.

By performing preventive maintenance, you eliminate the inconvenience of getting the equipment stopped when you need it most, reducing the cost of maintenance and reducing the risk of accidents.

Follow the equipment maintenance and adjustment recommendations:

- Change the gas pressure regulator (register) every 5 years or when it is defective;
- Check the expiration date of the gas hose and follow other instructions as recommended by the manufacturer;
- After finishing the frying process, keep the gas pressure regulator (register) closed, avoiding pressure in the hose;
- The gas outlet holes on the burner must always be unobstructed. If they become clogged, use a needle for cleaning on stove;



ATTENTION!

Preventive maintenance requires a trained professional.

Whenever any item regarding the safety of the equipment (such as cleaning or maintenance) is removed, reset it and confirm that it is performing its function correctly.

When you experience any malfunction or non-compliance, refer your equipment to the nearest service center. See technical assistance on our website: www.metvisa.com.br

5.3 Prolonged Interruption in the Use of the Equipment

When you have to leave the equipment stopped for an extended period of time, perform a thorough cleaning, including the accessories. It is advisable to protect all parts of the equipment with white petroleum jelly or with suitable products that are commercially available. You must also protect the equipment from dust by covering it with a nylon or other material.

6. Analysis and Troubleshooting

6.1 Problems, possible causes and solutions

IMG quality products are designed with materials and components that guarantee a longer service life for your equipment. However, due to natural wear, improper use or lack of maintenance, the equipment may have irregularities in its operation.

In the following table, you can see possible causes and solutions:

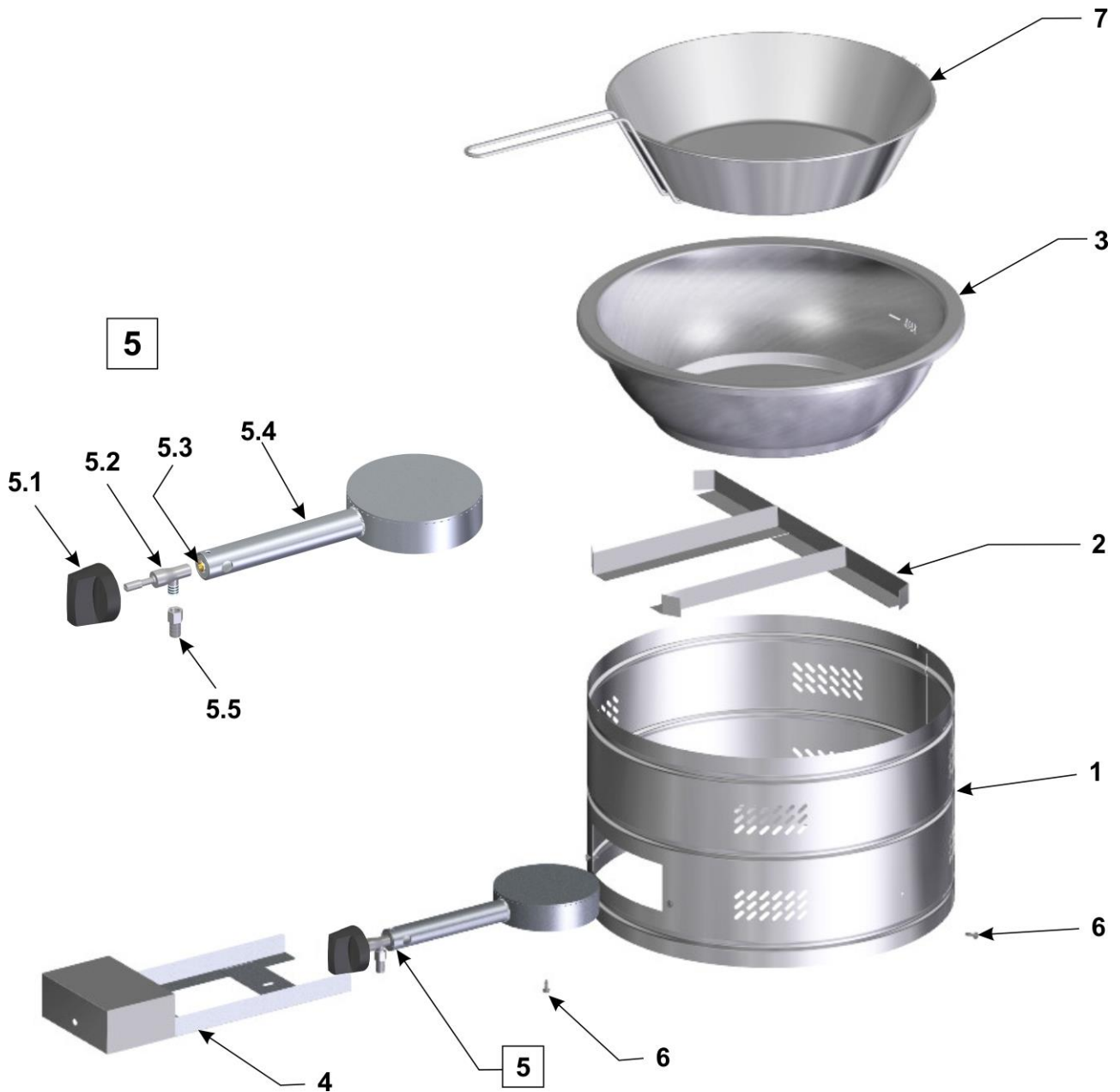
PROBLEMS	POSSIBLE CAUSES	SOLUTION
Burners do not light	Lack of gas.	Check if there is gas in the cylinder, if the gas cylinder register is open, if the gas hose is connected and if the gas regulator is open.
	Damaged or broken pressure regulator (register).	Send equipment to the nearest authorized service station or contact the factory.
	Clogged burner.	Unclog burner holes using a needle for cleaning stove nozzles, if not resolved, send the equipment to the nearest authorized service station or contact the factory.
	Lack of gas.	Below, check the possible causes and solutions for gas leak (page 16).
Lack of gas	Damaged or broken pressure regulator (register).	Send equipment to the nearest authorized service station or contact the factory, as there are risks of accidents.
	Injector nozzle out of position.	Send equipment to the nearest authorized service station or contact the factory, as there are risks of accidents.
	Defective gas cylinder.	Check if has gas leakage using only soap foam. If there is a leak, inform the technician to repeat the installation. If the leak persists, take the cylinder to a well-ventilated location and inform the dealer or distributor of the cylinder.
	Gas cylinder installed in the horizontal position.	Install the cylinder in a vertical position. Never overturn, pour or tilt the cylinder, as the gas may flow into the liquid phase, canceling the pressure regulator function, which can cause serious accidents.
Equipment with a burning or smoke smell.	The oil has lost its ideal characteristics for frying.	It is recommended not to use the same oil for many operating cycles. Check some instructions from ANVISA (National Health Surveillance Agency) on page 13.

Difficulty adjusting the flame	Damaged or broken pressure regulator (register).	Send equipment to the nearest authorized service station or contact the factory, as there are risks of accidents.
	Gas regulator button broken.	To replace the button contact or send the equipment to an Authorized Technical Assistance.
Lack of gas during operation	Lack of gas.	Check if there is gas in the cylinder, if the gas cylinder register is open, if the gas hose is connected and if the gas regulator is open.
	Damaged or broken pressure regulator (register).	Send equipment to the nearest authorized service station or contact the factory, as there are risks of accidents.

For more information and clarification, contact the Authorized Technical Assistance nearest you. See list of technical assistance on our website: www.metvisa.com.br

7. ANNEXES

Exploded View Drawing

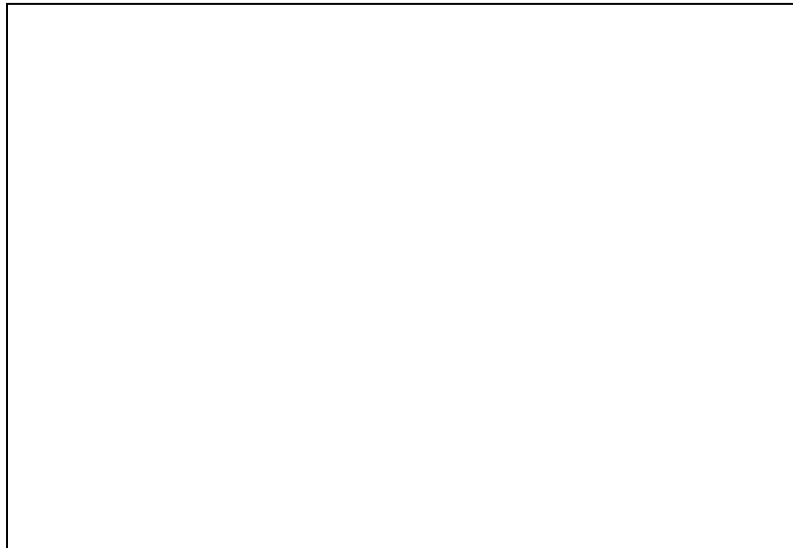


* Image merely illustrative.
Appearances can vary according
to the model.

Spare Parts

Position	Code	Description	Quantity
1	GAB030	Structure	01
2	SBT005	Burner Support	01
3	THO001	Bowl	01
4	SUD001	Sliding Support	01
5	CJT190	Complete Burner	01
5.1	BOT053	Gas Regulator Button	01
5.2	TNR001	Gas Register	01
5.3	IJT001	Gas Register Injector	01
5.4	BAL015	Soldier Burner Nozzle	01
5.5	CNX001	Gas Register Connection	01
6	PRA008	Stainless Steel Hexagon Screw	05
7	CET003	Frying Basket	01

IMG BRASIL PRODUCT MANUFACTURER



IMG BRASIL Gastronomy Machinery Industry Ltda.

CNPJ 11.193.347/0001-14 - CREA 131726-3
Road. Antônio Heil - KM 23 Nº 5825 - Neighborhood: Limoeiro
ZIP CODE 88352-502 - Brusque - SC - Brazil
Phone/fax. +55 47 3251-5555 - Web Site: www.metvisa.com.br
Mail: sac@metvisa.com.br - export@metvisa.com.br



Know our complete
line of products.